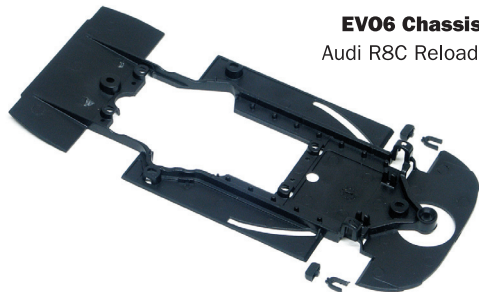


CS12T-60

EV06 Chassis
Audi R8C Reloaded



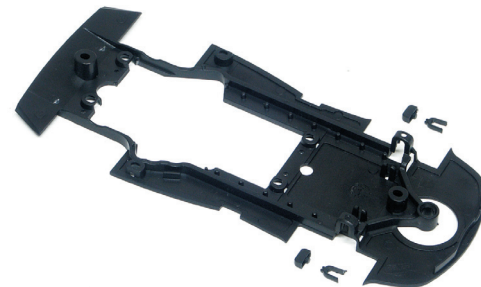
CS14T-60

EV06 Chassis
Nissan R390 GT1



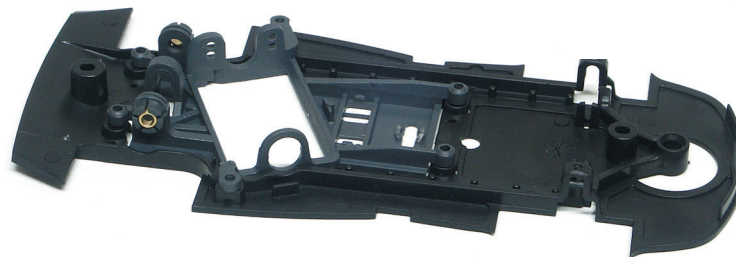
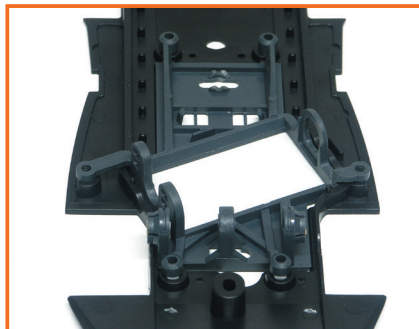
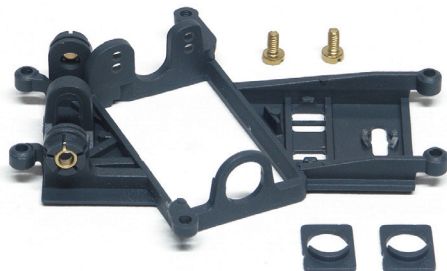
CS10T-60

EV06 Chassis
McLaren F1 GT-R



CH60

EV06 Motor mounts
Anglewinder - 0,5mm OFFSET



SPARE PARTS

www.slot.it



MN09C

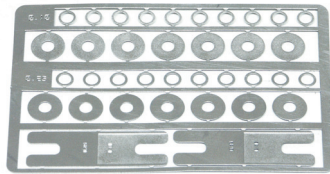
Flat-6 20K

20.500 rpm
200g*cm @12V
Front shaft length: 7,3 mm

MN11H-1

Flat-6R 22K

22.000 rpm
220g*cm @12V
Front shaft length: 7,3 mm



PA47

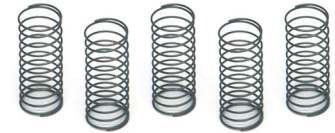
Set of spacer

for hubs and bushings
0,1/0,25 mm thick

CH55A

Springs

Soft springs
for CH47 (8x)



PA43-pl

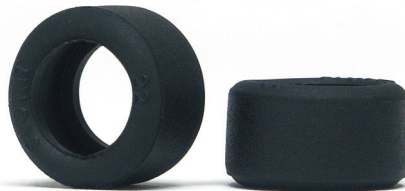
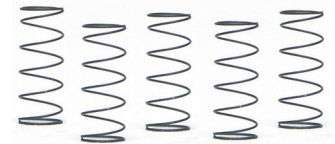
Hubs Ø 16,5

Plastic 16,5x8 light wheels
+ plastic inserts OZ type
dark grey (4x) - 0,76g

CH55B

Springs

Medium springs
for CH47 (8x)



Tires

PT29 F22 compound, slick F1,
20x12 tires (4x) for PA20

PT30 F15 compound, slick
20x11,4 tires (4x) for GT

PT31 F22 compound, slick
20x11,4 tires (4x) for GT

Metric screw

CH51 2,2x8mm, brass, small head (10x)

CH52 2,2x8mm, brass, big head (10x)

CH53 2,2x5,3mm, brass, small head (10x)

CH54 2,2x5,3mm, brass, big head (10x)

